



EclipseHX Quick Start Guide

This quick start guide describes how to set up a basic **Eclipse® HX digital matrix system**. It explains how to:

- Connect interface cards, user panels and other devices to the matrices.
- Set up the EHX configuration software on the PC.
- Set up and configure the matrix.

Tip: For detailed help with setting up and configuring your Eclipse HX system, see the full **Eclipse HX documentation set** available in the Eclipse HX software distribution package.

1.1 Connecting your Eclipse HX devices

1. Ensure the Eclipse HX matrix is powered off.
2. Confirm the required interface cards (MVX-A16, E-IPA, E-Dante64, E-MADI64, E-FIB) and interface modules are installed in the matrix.
3. Connect user stations, interfaces, and networks as required.
4. Connect the matrix to your network.
5. Power on the Eclipse HX matrix.

1.2 Connecting the EHX PC

The Eclipse HX matrix is set up to automatically obtain an IP address from a DHCP server on your network. If no DHCP server can be located, the matrix defaults to the IP address of 169.254.0.100.

1.3 Installing the EHX configuration software

The EHX configuration software is included in the Eclipse HX software distribution package. Separate installers are provided for the EHX Client and EHX Server. Run the appropriate installer and follow the EHX Setup Wizard instructions.

When the installation is complete, run the EHX software.

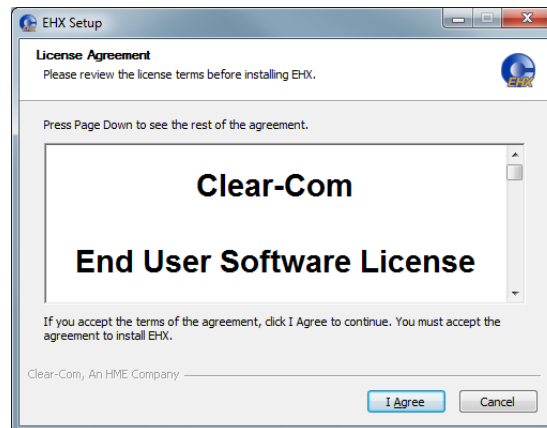


Figure 1: EHX Setup, Software License screen

Note: Only select the server installation if you want to run EHX in Client-Server mode, where multiple clients are connected to a shared central configuration server.

1.4 Discovering the matrix in EHX

To discover the matrix (and associated cards and ports) in EHX:

1. Connect your EHX PC to the same network that your matrix is connected to.
2. Run EHX. You will be prompted to create a new EHX project. A project holds the configurations that can be applied to one or more matrices.
3. If your matrix is not powered yet, power it now. Your matrix will now be seen on the Layout screen, in the **Discovery** pane.

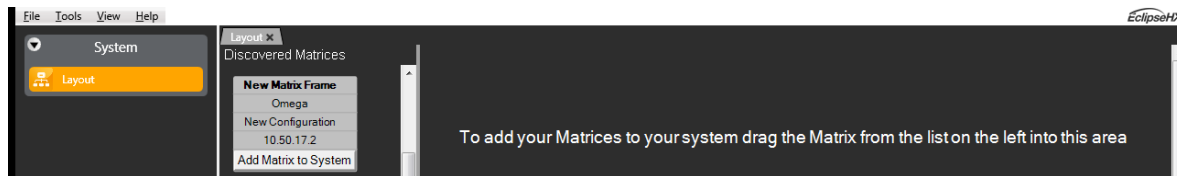


Figure 2: EHX > Discovered Matrices

4. Drag the matrix to the **Layout** screen to bring it into your project.
5. **Save** the project.
6. **Retrieve Map from Matrix.**

Note: The matrix may not be discovered if broadcast ports are blocked on the networks. In this case, right click on the Layout area, add the new matrix and enter its IP address. You should now be able to retrieve the map. If broadcasts are blocked, some discovery dependent functions (for example, retrieving a map) may be unavailable.

1.5 Configuring the Matrix

1.5.1 IP address

By default, the Eclipse HX matrix automatically obtains an IP address from the network (see Section 1.2). However, Clear-Com strongly recommends setting a static IP address before normal operation. To set a static IP address on the matrix:

1. In EHX, right-click the matrix on the **Layout** screen.
2. Select **Change IP Address**. The current IP settings are displayed.
3. Make any desired adjustments to the IP settings.
4. Apply the changes to the matrix (then **Apply Map to Matrix**).

1.5.2 Applying a configuration

In EHX, the matrix initially appears in the **amber** state. This indicates the current project configuration has not yet been applied to the matrix. To apply the configuration, **Apply Map to Matrix**.

Note: If the matrix is not shown but you can apply or retrieve configuration maps, status traffic may be blocked by the network or your computer. Ensure EHX is allowed through your computer's firewall.

After the configuration is applied, the matrix resets. When it returns to the network, it is displayed as **green** on the Layout screen (the matrix is now running the configuration from this project).

1.5.3 Configuring the system

The EHX sidebar menu lists the available configuration options, based on the interface cards and user panels associated with the matrix. Mandatory steps that are not yet complete are highlighted in **amber**. To see what is missing, hover over the amber menu item.



Figure 3: EHX tooltip, missing step

Basic configuration steps (example):

Hardware

- Configure cards, their IP settings & label any ports
- Register Free Speak wireless transceivers in the Transceivers screen
- Register FreeSpeak beltacks in the Access screen

Configuration

- Create and label roles for FreeSpeak wireless beltacks
- Create, label, and associate interfaces with any partylines, fixed groups, IFB and other functions as needed
- Assign keys to panels

When done, **Apply Map to Matrix**

Tip: Any changes that you make can be applied to the matrix by clicking **Apply Map to Matrix** in the EHX sidebar.

For more information go to the **Eclipse HX Knowledge Center** on the Clear-Com website.