



Production Maestro® Pro

Quick Start Guide

The following quick start guide:

- Describes how to install your Production Maestro Pro software.
- Provides a quick reference to the Production Maestro Pro screen.

Tip: For detailed information about installing, starting and using Production Maestro Pro, see the **Production Maestro Pro User Guide**.


1.1 Before installing

Production Maestro Pro is supported by Microsoft Windows 7 (32-bit and 64-bit), Microsoft Windows 8.1 (32-bit and 64-bit), Microsoft Windows Server 2008 SP2 (32-bit and 64-bit) and Microsoft Windows Server 2008 R2 (64-bit).

If you are installing Production Maestro Pro as an update to an existing Production Maestro Pro installation, you must first uninstall your existing version of Production Maestro Pro. Ensure that you save your Production Maestro Pro layouts project files (*.ccr files) and all relevant EHX system configurations (*.hxn files)


1.2 Installing Production Maestro Pro

To install Production Maestro Pro to your PC:

1. Insert the CD-ROM into the PC. Navigate to the CD-ROM and click the relevant *.exe file for your machine. Click **either**:
 -  **PMSetup**.
2. When the **Setup** wizard has loaded, the **License Agreement** dialog is displayed. Use the internal scroll bar to review the agreement. To continue with the installation, click **I Agree**.
3. The **Choose Install Location** dialog is displayed. The default location is **Program Files > ClearCom** on the C Drive. To select a different location, click **Browse**. To continue, click **Next**.
4. The **Choose Start Menu Folder** dialog is displayed. The default Start Menu folder is **Clear-Com\Production Maestro**. To select an alternative folder **either**:

- Select from the list of existing Start Menu folders. Use the dialog scroll bar to navigate the list.
- Enter a name into the selection field to create a new folder.

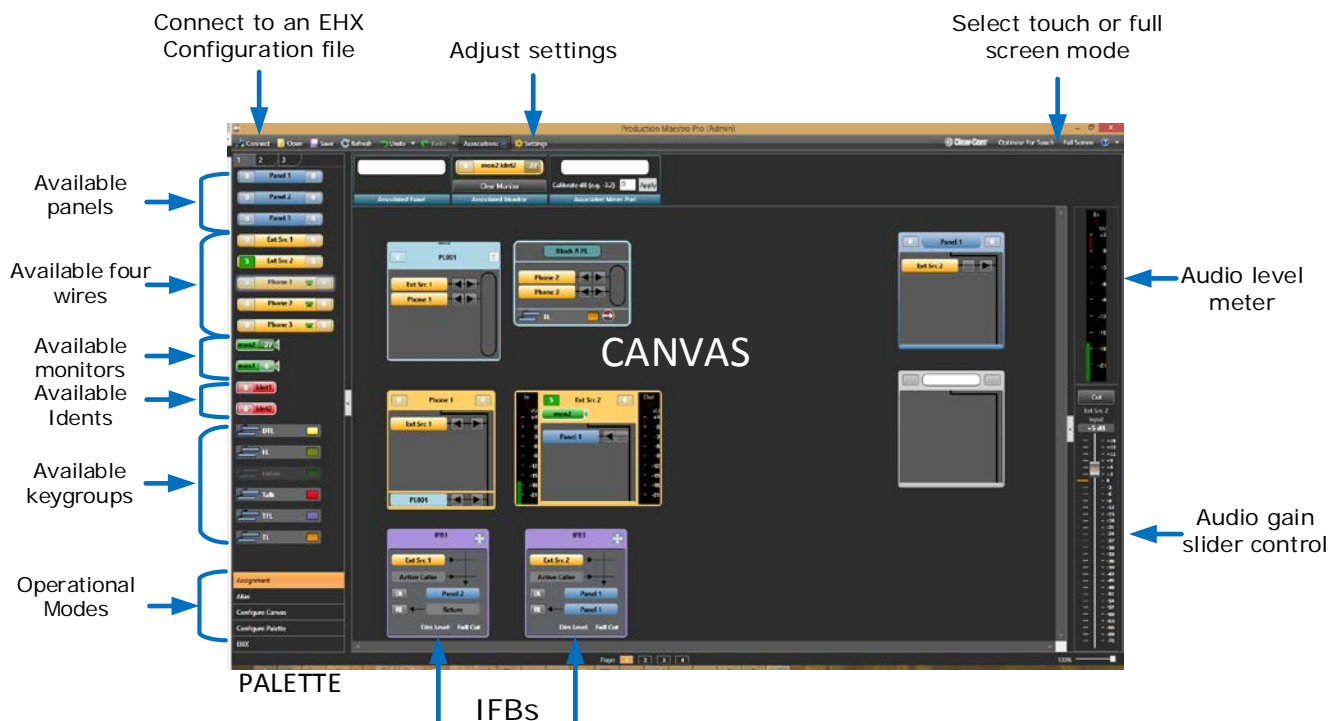
To prevent the creation of shortcuts, select **Do not create shortcuts**. Click **Install**.

5. Production Maestro Pro starts to install. During installation, an installation progress bar is displayed []. For more detailed information about the progress of the installation, click **Show Details**.

When the installation is complete, click **Close**.

Note: On installing Production Maestro Pro, a firewall dialog may be displayed asking if Windows should **Block** or **Unblock** Production Maestro Pro. Select **Unblock Production Maestro Pro**.

1.3 Quick reference to the Production Maestro screen



Production Maestro Pro Quick Start Guide. PN: 399G143 Rev A

06 May 2015

Copyright © 2015 HME Clear-Com Ltd. All rights reserved.