

RCS-2700 Programmable Assignment Station

Analog Partyline Solutions

Linking
People
Together



RCS-2700

Key Features and Benefits

- 8-source x 24-destination programmable assignment panel
- Expandable up to 15 sources and 72 destinations
- Stores 14 presets in non-volatile memory
- Easy-to-use RCS-WIN software for PC
- Multiple systems can be controlled from the same PC
- Latching relays keep current draw extremely low
- TW compatible
- Front panel security lockout
- Easy-to-wire Euro-terminal blocks used for rear panel connections
- External contact closure input for remote preset selection

Encore™ is a 2-wire analog partyline system with intuitive plug-and-play design and superior “Clear-Com Sound” audio clarity.

Description

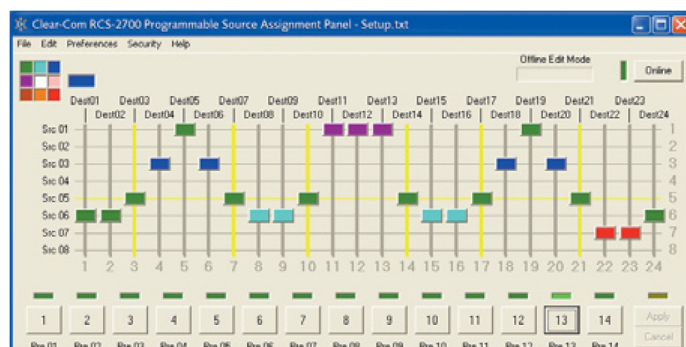
The RCS-2700 is an 8-source by 24-destination assignment panel that offers remote switching of partyline assignments for medium to large-size systems. The sources are the channels from a main station or partyline interface from a matrix or similar system. The destinations are the channels from a beltback or another interface.

Operation

Once programmed, different presets can be selected with either a contact closure, PC, or directly from the front panel. The front panel can be locked to prevent unauthorized tampering. Up to six RCS-2700 panels can be wired together in various configurations for up to a 15-source by 72-destination system. By utilizing RS-232 data connections, the PC can be located up to 300 ft (90 m) away from the RCS-2700's location.

RCS-WIN Software

RCS-WIN is the programming software for use with the RCS-2700. It provides a virtual panel on a PC that shows the sources, destinations and preset numbers of the RCS system. The software will display either 8- or 15-source channels and 24 destinations at a time. When multiple RCS-2700 panels are connected, a mouse click will toggle between the 24 destination sets. Once programmed, the RCS-2700 does not have to be connected to a PC, but for real-time monitoring and control of the system it will need to be connected. The RCS-2700 saves all preset information in non-volatile memory, allowing the PC to download the presets from the panel, edit them and upload them back to the panel. RCS-WIN operates on Windows v.XXX and higher.



RCS-WIN Software

RCS-2700 Programmable Assignment Station

Analog Partyline Solutions

Technical Specifications

dBu is an absolute measurement. 0 dBu is referenced to 0.775 volts RMS

Audio

Partyline Intercom: 20 - 20KHz (passive switching)

RS-232 Data

Baud rate: 19.2 Kbps

Start Bits: 1 start bit

Stop Bits: 1 stop bit

Parity: no parity

Crosstalk

<-70 dB

Frequency Response

Port-Port: 20Hz - 20KHz

Switching Matrix Latching Relays

Switching Current: <=2A

Power Requirements

Input Voltage: 27-33 VDC

Input Current (max): <= 80mA

Euro-block pins for:

Sources

Source expansions

Source power

Destinations

Destination power

RCS power

Source 8 continuation

Data links

Matrix/contact closure

Environmental

32° to 122° F (0° to 50° C)

Dimensions

3.5 x 19 x 10.75 in (HxWxD)

(89 x 483 x 273 mm)

Weight

5.5 lbs. (2.5 kg)

Sizes

Single frame, 1x2, 2x1, 2x2, 1x3, 2x3

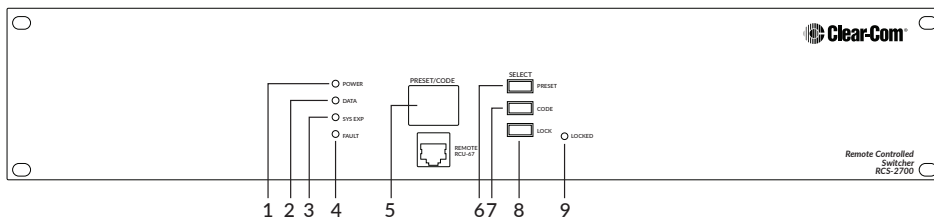
RCS-WIN hardware requirements

Pentium I or better

16 MB RAM, 12 MB Hard Disk Space

Monitor: 800 X 600 Minimum Resolution

RCS-2700 Front Panel

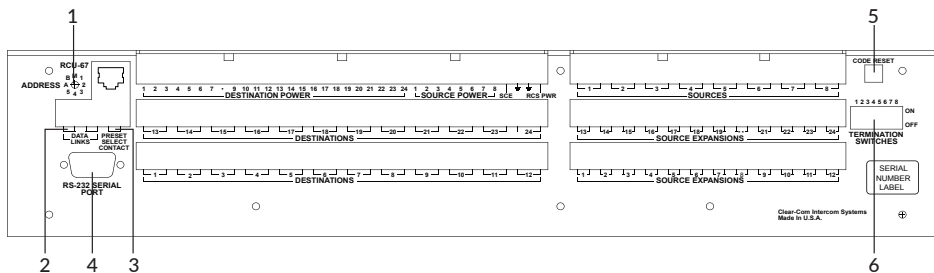


Legend

Front Panel

1. Power Light
2. Data Light
3. System-Expansion Light
4. Fault Light
5. Digital Display
6. Preset Button
7. Code Button
8. Lock/Unlock Button
9. Locked Light

RCS-2700 Rear Panel



Back Panel

1. Address Switch
2. Data Links
3. Preset-Select Contact
4. PC Serial Port
5. Code-Reset Button
6. Termination Switches

Order Codes

RCS-2700:

Program Station Assignment Panel

RCS-WIN:

Programming Software