


# Production Maestro Pro

Eclipse-HX Digital Matrix Solutions



Linking  
People  
Together



Production Maestro Pro

## Key Features and Benefits

- Real-time production tool
- Intuitive drag-and-drop assignment
- IFB Management controls
- Multi-user synchronized operation
- Mouse or touchscreen interfacing
- Audio input and output level adjustment
- Rename conferences, feeds and IFBs
- Monitoring features for inputs, outputs, conferences and IFBs
- Activity and level monitoring of feeds at a glance with Clear-Vu

Production Maestro Pro provides administrators and operators with an easy and intuitive means to make assignments to an entire Eclipse HX network.

## Description

The Production Maestro Pro Conference and Lines Management Software (PM Pro) is an add-on module for the EHX Software that easily enables one or more users to monitor and control the distribution of conferences, IFBs and audio. PM Pro provides comprehensive IFB Management capabilities with multi-point, visual and audible IFB monitoring from multiple platforms, such as tablets, PCs and intercom panels.

## Operation

PM Pro runs on a single client PC to provide seamless control of one or more Eclipse HX matrices. For larger installations, multiple PM Pro clients can work together to control multiple matrices. Users can drag-and-drop to add ports to conferences, add sources to IFB destinations, move ports from one conference to another, route 4-wires and change labels. By using the scroll wheel or on-screen fader, users can easily change IFB dim, and source input and output levels to IFBs. Each client screen shows all member activity for each conference or IFB, in addition to showing assignments made by other PM Pro clients. Key groups allow multiple operator panels to be assigned to IFB or conferences in a single action. PM Pro also includes a settings drop-down menu, a split-screen canvas and the preset conferences.

## Port Palette and Central Canvas

Users can freely position and size multiple conferences, ports and IFBs on the Central Canvas while audio ports are easily arranged on the Port Palette. The scalable UI design can be adjusted to display numerous elements on a single screen or connect multiple screens for larger layouts. Screen layouts can be saved to tailor operation for special events or changing setups. Preset conferences are also available to quickly establish pre-defined conferences and can be given labels to describe their use.

## Audio Monitoring

Monitor speakers at the user's position are represented by loudspeaker icons. Dragging speaker icons to the conference and IFB assignment boxes causes that conference or IFB to be routed to the monitor speaker. One or more speakers may be used to monitor multiple conferences. A level control adjusts the individual conference contribution to the loud speaker.

### Clear-Vu Audio Metering

Clear-Vu allows the PM Pro to show visual audio levels on a screen using real-time graphical meters. Using two standard scaling/ballistics options, Nordic and VU, customers can easily monitor and adjust audio levels with the click of a mouse.

The LMC-64-HX card, installed in the Eclipse HX frame, enables PM Pro to utilize the Clear-Vu audio metering for up to 64 channels per card. Single channel spot metering is also available without the use of a LMC-64-HX card.

### Technical Specifications

#### Operating Systems:

- Microsoft Windows 10 (32-bit and 64-bit)
- Microsoft Windows 7 (32-bit and 64-bit)
- Microsoft Windows 8.1 (32-bit and 64-bit)
- Microsoft Windows Server 2008 SP2 (32-bit and 64-bit)
- Microsoft Windows Server 2008 R2 (64-bit)
- Operation on other platforms no longer supported

**Processor:** 1GHz

**Memory:** 1GB RAM

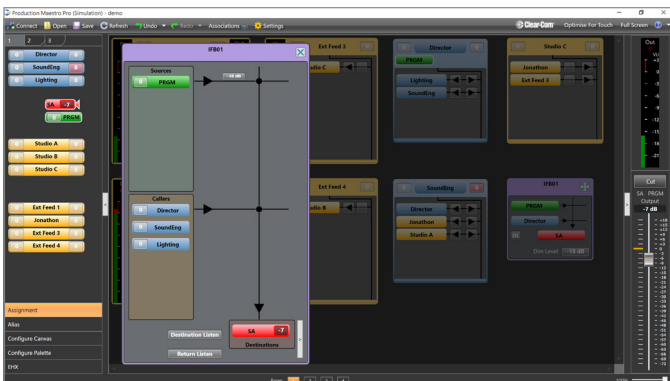
**Hard Disk:** 1GB, minimum

**Display resolution:** SVGA or higher

**User entry:** Keyboard/mouse or touchscreen

**Network:** IEEE 802.3 Ethernet card

**NET framework version:** Microsoft .NET Framework 4.0 SP1 (supplied with PM Pro)



IFB Management Screen



Overview Screen

#### Notice About Specifications

While Clear-Com makes every attempt to maintain the accuracy of the information contained in its product manuals, that information is subject to change without notice. Performance specifications included in this manual are design-center specifications and are included for customer guidance and to facilitate system installation. Actual operating performance may vary.