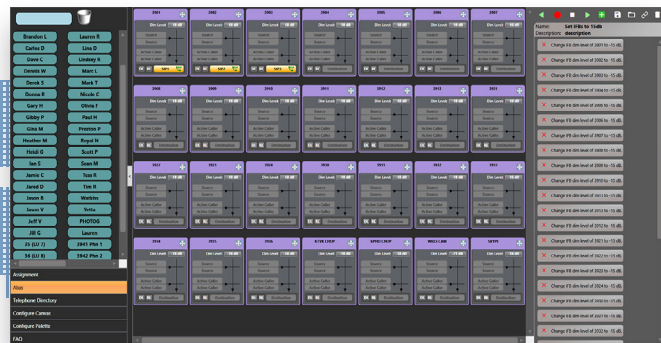


Dynam-EC Management Software

Eclipse-HX Digital Matrix Solutions

Linking
People
Together



Dynam-EC

Key Features and Benefits

- Real-time production tool
- Intuitive live view of intercom routing and assignments
- Control and monitoring of IFB, conference and lines routing
- Routing and monitoring of telephone hybrids and SIP/VoIP lines
- Macro facility for fast execution of repeat command sequences
- Alias naming of IFBs, conferences and lines
- Multi-point audio monitoring and level control
- Multi-user synchronized operation
- Visual level monitoring at a glance with Clear-Vu
- Transparent multi-matrix/multi-site operation
- Mouse or touchscreen mode

Dynam-EC™ (Dynamic Eclipse Configurator) provides administrators and operators with an intuitive and powerful means of making intercom assignments.

Description

Dynamic Eclipse Configuration (Dynam-EC) is an add-on module for Eclipse® EHX which enables one or more operators to monitor and assign IFBs, conferences and external lines in real-time. Dynam-EC's comprehensive management capabilities include multi-point visual and audible IFB monitoring from PC or tablet-based control surfaces.

Port Palette and Central Canvas

Dynam-EC's main screen shows a canvas area where intercom resources are placed to provide a real-time graphical view of assignments, audio levels and audio routing activity. The detailed presentation of each resource may be tailored to each installation's requirements for audio monitoring and/or assignment.

IFBs and Conferences

As with other canvas resources, conferences are presented in a graphical format, showing current feed assignments, active members and alias labels. Similar to conferences, IFBs are presented as graphical objects which show IFB source (Program, Mix Minus, etc.), callers (Intercom Panels), destinations, audio dim levels and alias labels. An independent IFB return path can also be assigned (this is typically used where de-embedders extract audio from the talent microphone and present it on a separate matrix input). All canvas resources can be reassigned dynamically with a drag-and-drop operation. On-screen buttons allow operators to monitor or contribute to the final IFB mix or the IFB return audio.

Telephone Lines (Conventional POTS and SIP/VoIP)

Eclipse-HX supports connection to conventional POTS lines via 2-channel TEL-14 modules and SIP/VoIP lines via 8-channel LQ Series devices. For both line types, Dynam-EC provides facilities for line monitoring and call setup. Typically, POTS and SIP/VoIP lines are pre-assigned to IFBs or conferences with incoming calls auto-answered by the system. Outgoing calls can be made from either intercom panels or are dialed using the Dynam-EC's built-in phonebook. The phonebook is built manually by keyboard input or using a V-Card import. For both SIP/VoIP and POTS lines, call routing allows a caller to direct their call by dialing additional digits. For SIP/VoIP lines, caller ID information may be used to automatically label IFBs and/or phone lines with the caller's name.

Macros

The Dynam-EC macro feature allows operators to flexibly create sequences of operations to be executed in one action. This feature is typically used to adjust the setup of the system in advance of a show or reset assignments between shows. Each macro can be recorded, edited and assigned a label in advance and can be saved with the system layout. The macro undo button reverses the operation of the macro to quickly restore the previous state.

Audio Monitoring

Audio monitoring allows the Dynam-EC administrators to quickly and easily listen into the intercom resources, including lines, IFBs and conferences. Output monitoring is an especially useful system feature which allows them to hear the mix that is currently being routed to a system output. Input monitoring allows an audio source to be monitored as it arrives into the system (post input gain adjustment). One or more speakers may be used to monitor multiple conferences.

Clear-Vu Audio Metering

The Clear-Vu feature provides assignable on-screen audio meters to intercom resources. This includes input and output meters for lines and conferences. The system supports two standard scaling/ballistics options, Nordic and VU, allowing easy display and adjustment of audio levels with the click of a mouse. The LMC-64-HX interface card, installed in an Eclipse-HX frame, enables Dynam-EC to provide the Clear-Vu audio metering for up to 64 channels per card. Single channel spot metering is available without requiring an LMC-64-HX card.

Intercom Panel Key Assignment

Key groups assignment enables multiple intercom panels to be assigned to an IFB, conference or line in one action.

Recommended PC Specification

Dynam-EC is supported by EHX v9.1 or higher.

OS Version

Windows 10
Windows Server 2019
Windows Server 2016

Processor: Intel i7 10th generation or equivalent

Memory: 8GB (16MB for large networked systems, servers and heavily used Dynam-EC clients)

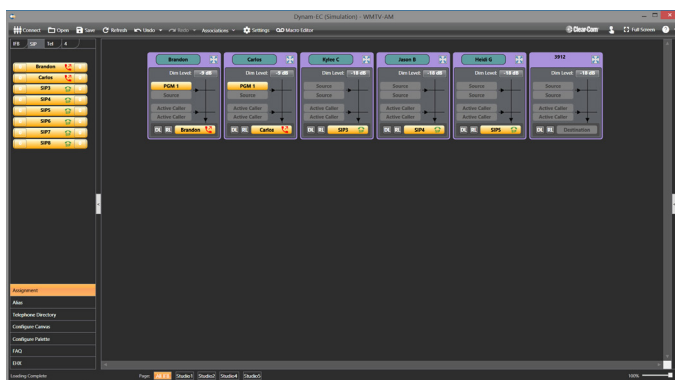
Graphics (GPU): Dedicated GPU for large network systems

Display resolution: SVGA or higher

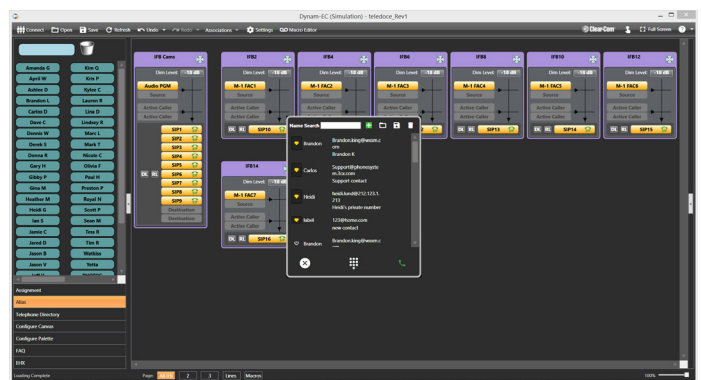
User entry: Keyboard/mouse or touchscreen

Network: IEEE 802.3 Ethernet card.

NET framework version: Microsoft .NET Framework 4.0 SP1 (supplied with Dynam-EC)



Dynam-EC Management Layout



Telephone Dialing Pop-up Window

Order Codes

DYNAM-EC-1-HX
DYNAM-EC-SITE-HX